

LTCC 带通滤波器 (LTCC Bandpass Filter) HT-B3216-17-21.2G+

50 Ω 17GHz to 21.2GHz

Features

- Extremely wide passband, 17-21.2GHz
- Small size 1206(3.2x 1.6 mm)
- Temperature stable
- LTCC construction

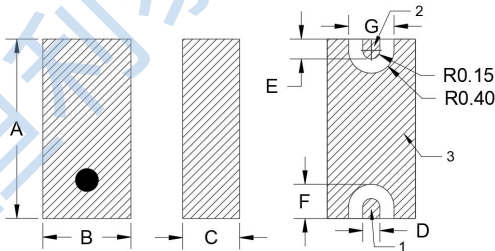
Applications

- Wireless communication
- Harmonic Rejection
- Transmitters / receivers

Pad Connections

| | |
|--------|---|
| Input | 1 |
| Output | 2 |
| Ground | 3 |

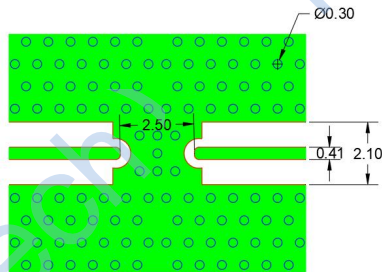
Outline Drawing



Outline Dimensions : mm

| A | B | C | D | E | F | G | Tol. |
|-----|-----|-----|-----|------|-----|-----|------|
| 3.2 | 1.6 | 1.0 | 0.3 | 0.35 | 0.6 | 0.8 | .020 |

Suggested PCB Layout



Note:

- 1.The trace width and spacing are as shown in the figure, using RO4350B dielectric with a thickness of 0.2mm. The copper thickness on both sides is 1 OZ. If other materials are used, the trace width and spacing may need to be adjusted.
- 2.Continuous copper pour is applied on the back layer.

Electrical Specifications(1) at 25°C

| Parameter | Frequency (MHz) | Min. | Typ. | Max. | Unit |
|-----------|------------------|-----------|------|------|------|
| Pass Band | Center Frequency | — | — | 19.1 | GHz |
| | Insertion Loss | 17.0-21.2 | — | 1.5 | dB |
| | In-band Ripple | 17.0-21.2 | — | 1.0 | dB |
| | VSWR | 17.0-21.2 | — | 2.0 | : 1 |
| Stop Band | Rejection Loss | 13.8 | 30 | — | dB |
| | | 27.5-31 | 30 | — | dB |

Maximum Ratings

| | |
|-----------------------|-----------------|
| Operating Temperature | -55°C to +125°C |
| Storage Temperature | -55°C to +125°C |
| RF Power Input* | 5W at 25°C |

- *1. Permanent damage may occur if any of these limits are exceeded.
2. Power rating applies only to signals within the passband.