

LTCC 带通滤波器 (LTCC Bandpass Filter) HT-B4842-950-1250M+

Features

- Low Insertion Loss.
- Excellent power handling.
- Good rejection.
- Temperature stable.
- LTCC construction, and has good moisture resistance, corrosion resistance, high reliability.

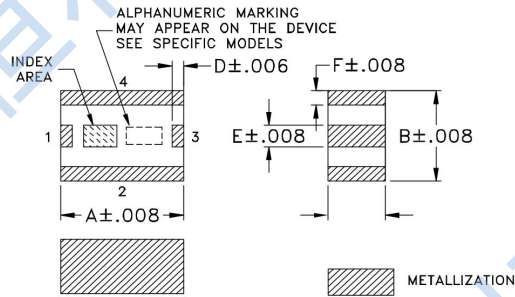
Applications

- Harmonic Rejection.
- Transmitters / Receivers.
- Harmonic Rejection.
- SATCOM.

Pad Connections

Input	1
Output	3
Ground	2, 4

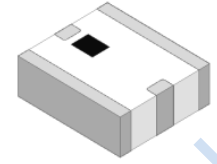
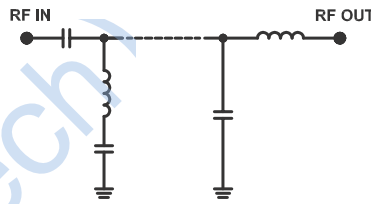
Outline Drawing



Outline Dimensions : inch

	mm					
	A	B	C	D	E	F
	.189	.165	.059	.016	.039	.016
	4.80	4.20	1.50	0.40	1.01	0.41

Functional Schematic



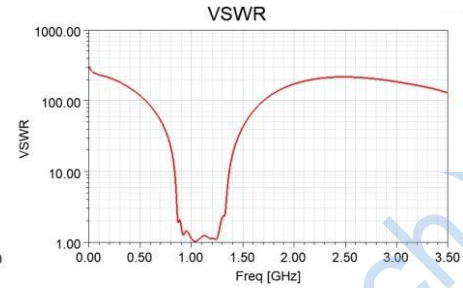
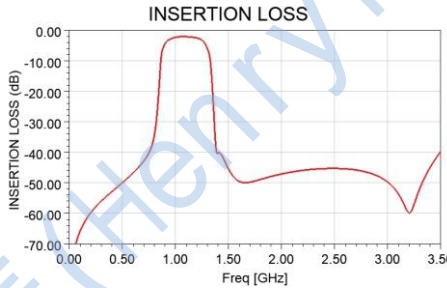
50 Ω
950MHz to 1250MHz

Electrical Specifications(1) at 25°C

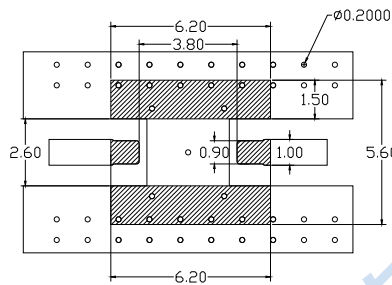
Parameter	Frequency (MHz)	Min.	Typ.	Max.	Unit
Pass Band	Center Frequency	—	1100	—	MHz
	Insertion Loss	950-1250	—	6.0	dB
	VSWR	950-1250	—	2.0	:1
Stop Band, Lower	Attenuation	DC~730	30	—	dB
Stop Band, Upper	Attenuation	1460-1500	32	—	dB
		1540-1805	43	—	dB

(1) The specifications are tested at 25°C±5°C, relative humidity 55~75%.

(2) Other quality and characteristic not specify in this datasheet.



Suggested PCB Layout



NOTES:
1.COPLANAR WAVEGUIDE PARAMETERS ARE SHOWN FOR FR4 WITH THICKNESS 0.5MM.COPPER:1/2 OZ. EACH SIDE.
2.FOR OTHER MATERIALS TRACE WIDTH & GAP MAY NEED TO BE MODIFIED

Maximum Ratings

Operating Temperature	-55°C to +100°C
Storage Temperature	-55°C to +100°C
RF Power Input*	2W max at 25°C

* Passband rating, derate linearly to 0.25W at 100°C ambient. Permanent damage may occur if any of these limits are exceeded.