

LTCC 带通滤波器 (LTCC Bandpass Filter)

HT-BFCG-1952+

50 Ω 16.8GHz to 21.0GHz

Features

- Extremely wide passband, 950-2200 MHz
- Small size 0805(2.0 x 1.25 mm)
- Temperature stable
- LTCC construction

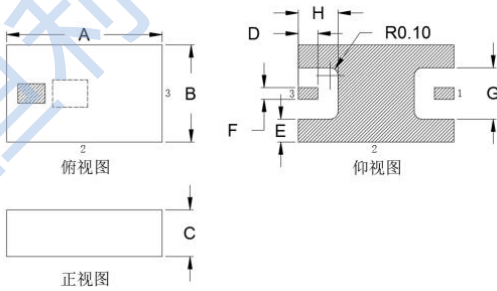
Applications

- Wireless communication
- Harmonic Rejection
- Transmitters / receivers

Pad Connections

Input	1
Output	3
Ground	2, 4

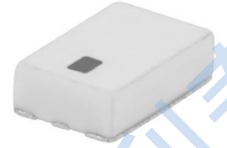
Outline Drawing



Outline Dimensions : inch mm

A	B	C	D	E	F	G	H
.079	.049	.022	.009	.012	.006	.026	.020
2.01	1.24	0.56	0.25	0.30	0.15	0.66	0.51

50 Ω
16.8GHz ~ 21.0GHz

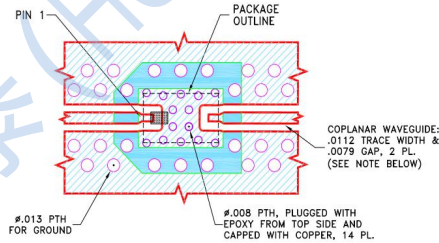


Electrical Specifications(1) at 25°C

Parameter	Frequency (MHz)	Min.	Typ.	Max.	Unit
Pass Band	Center Frequency	—	—	18.8	GHz
	Insertion Loss	16.8 - 21.0	—	0.9	dB
	Return Loss	16.8 - 21.0	—	15	dB
Stop Band	Rejection Loss	0.1 - 10.8	20	24	dB
		10.8 - 11.9	14	18	
		26.3 - 28	13	18	
		28 - 38.5	20	25	

1. This component should not be used as a DC-block. In applications where DC voltage and/or current is present at either the input or output ports, external DC blocking capacitors are required.

Suggested PCB Layout



NOTES:

1. TRACE WIDTH IS SHOWN FOR ROGERS R04350B WITH DIELECTRIC THICKNESS .020" ± .0015". COPPER: 1/2 OZ. EACH SIDE. FOR OTHER MATERIALS TRACE WIDTH AND GAP MAY NEED TO BE MODIFIED.
2. BOTTOM SIDE OF THE PCB IS CONTINUOUS GROUND PLANE.

- DENOTES PCB COPPER LAYOUT WITH SMOBC (SOLDER MASK OVER BARE COPPER).
- DENOTES COPPER LAND PATTERN FREE OF SOLDER MASK.

Maximum Ratings

Operating Temperature	-55°C to +125°C
Storage Temperature	-55°C to +125°C
RF Power Input*	1W at 25°C

*1. Permanent damage may occur if any of these limits are exceeded.
2. Power rating applies only to signals within the passband.