

LTCC 带通滤波器 (LTCC Bandpass Filter)

HT-BFHK-6751+

50 Ω 5.9GHz to 6.9GHz

The Big Deal

- LTCC Band Pass Filter with Integrated Interposer Board
- Ultra-High Stopband Rejection Structure – 80 dB typical
- Small Size, 1812 (4.5mm x 3.2mm)
- Shielded Construction

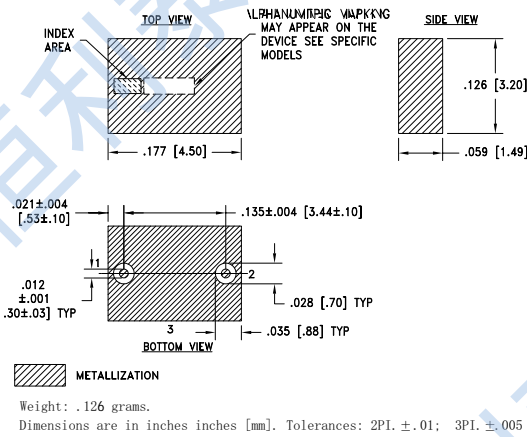
Features and Applications

- Test & Measurement Equipment

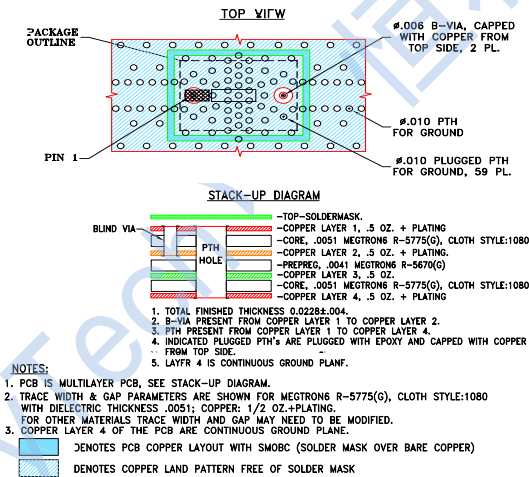
Pad Connections

Input	1
Output	2
Ground	3

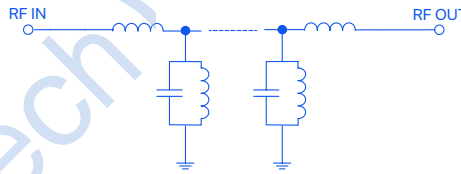
Outline Drawing



PCB Land Pattern



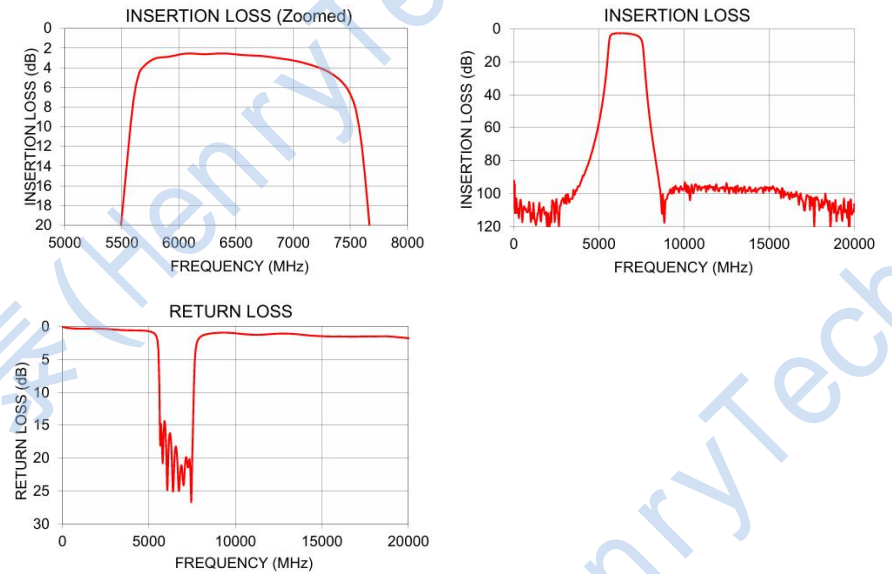
Functional Schematic



Electrical Specifications at 25°C

Parameter	Frequency (GHz)	Min.	Typ.	Max.	Unit
Center Frequency	—	—	6.4	—	GHz
Pass Band Insertion Loss	5.9-6.9	—	3.1	5.0	dB
Return Loss	5.9-6.9	—	12.0	—	dB
Stop Band, Lower Insertion Loss	1.0-4.0	80	90	—	dB
Stop Band, Upper Insertion Loss	9.2-20.0	80	90	—	dB

Typical Performance Data at 25°C



Maximum Ratings

Operating Temperature	-55°C to +125°C
Storage Temperature	-55°C to +125°C
RF Power Input*	1W at 25°C

