

Features

- linear phase, up to ± 3.5 deg typ @ $F_c \pm 7.5$ MHz
- good VSWR, 1.2:1 typ @ passband
- sharp insertion roll off
- shielded case
- aqueous washable

Applications

- military hi-rel systems
- high rejection applications
- image rejection
- IF signal processing

HT-SXBP-70+



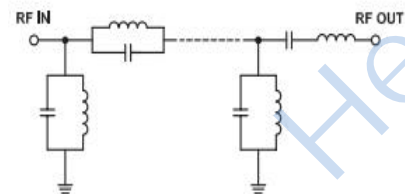
50Ω 63 to 77 MHz

CENTER FREQ. (MHz)	PASSBAND (MHz) (Loss < 3dB)	STOPBANDS (MHz)		VSWR (:1)				
		(loss > 20 dB)	(loss > 40 dB)	Passband Typ.	Max.	Stopband Typ.		
70	63-77	50	95	19	195-1000	1.2	1.7	18

Frequency (MHz)	Insertion Loss (dB)		Return Loss (dB)	Frequency (MHz)	Group Delay (nsec)
	α	σ			
0.5	87.62	2.80	0.04	62.5	3.34
19.0	45.25	0.29	0.06	63.0	1.96
50.0	29.54	0.83	0.38	64.0	0.13
54.0	18.44	0.24	1.12	65.0	-1.01
56.0	8.44	0.18	3.23	66.0	-1.67
57.0	5.06	0.14	6.08	67.0	-1.90
58.0	3.00	0.12	11.27	68.0	-1.81
60.0	1.55	0.09	24.15	69.0	-1.47
63.0	1.14	0.04	17.14	70.0	-0.99
70.0	0.95	0.03	17.72	71.0	-0.44
77.0	1.19	0.03	20.65	72.0	0.17
82.0	2.68	0.07	12.54	72.5	0.40
84.0	5.38	0.17	6.03	73.0	0.62
86.0	10.12	0.29	3.04	74.0	1.00
89.0	20.07	0.60	1.49	75.0	1.09
95.0	30.99	0.53	0.79	76.0	0.96
195.0	45.75	0.38	0.21	77.0	0.34
1000.0	57.28	0.68	0.44	77.5	-0.30

Operating Temperature	-40°C to 85°C
Storage Temperature	-55°C to 100°C
RF Power Input*	0.5W max.
Permanent damage may occur if any of these limits are exceeded.	

Functional Schematic

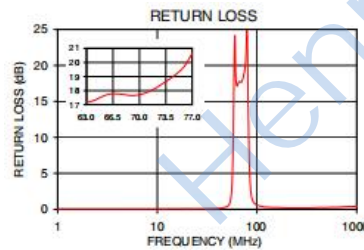
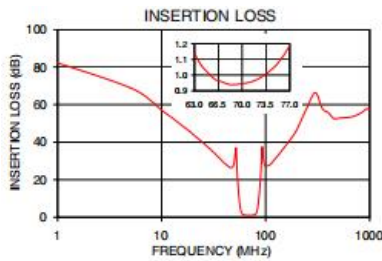


Pin Connections

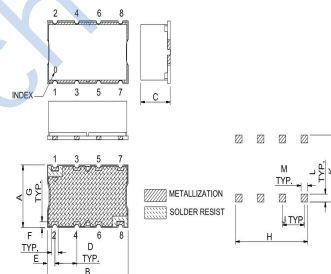
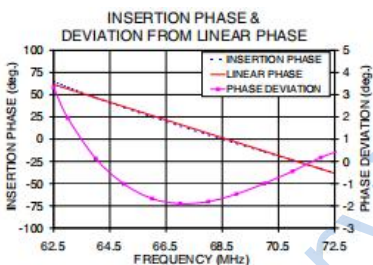
RF IN	1
RF OUT	8
GROUND	2, 3, 4, 5, 6, 7

Suggested Layout Tolerance to be within ± 0.5

A	11.18	G	1.02
B	18.80	H	16.76
C	6.86	J	5.08
D	5.08	K	11.94
E	1.78	L	1.40
F	1.52	M	1.52
WT	3g		



Outline Drawing



Suggested PCB Layout

