

# Low Pass Filter

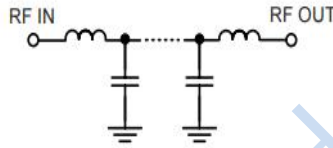
## Features

- High rejection (30 dB typical)
- Sharp cut-off
- Aqueous washable
- Miniature shielded package

## Applications

- Receivers/transmitters
- Defense communications
- Harmonic rejection

## Functional Schematic



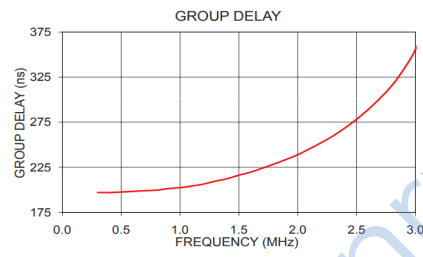
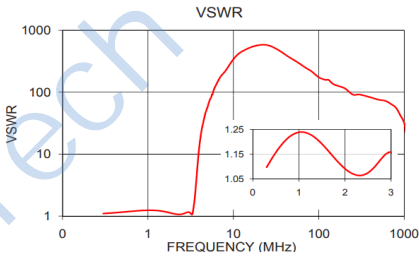
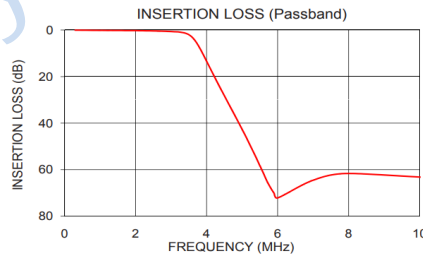
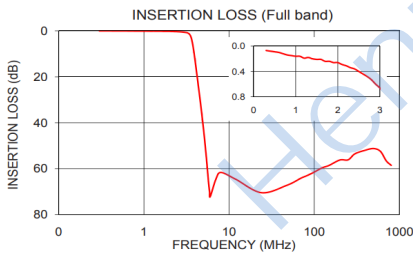
## HT-SXLP-3+



50Ω DC to 3 MHz

## Electrical Specifications at 25°C

Parameter		Frequency(MHz)	Min.	Typ.	Max.	Unit
Pass Band	Insertion Loss	DC-3	-	0.8	1.5	dB
	Freq. Cut-Off	3.5	-	3.5	-	dB
	VSWR	DC-3	-	1.2	1.6	:1
Stop Band	Rejection Loss	4.6-800	20	30	-	dB
	VSWR	4.6-800	-	35	-	:1



## Maximum Ratings

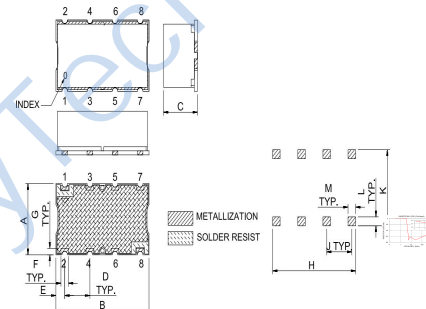
Operating Temperature	-40°C to 85°C
Storage Temperature	-55°C to 100°C
RF Power Input*	0.5W Max. @ 25°C

Permanent damage may occur if any of these limits are exceeded.

## Pin Connections

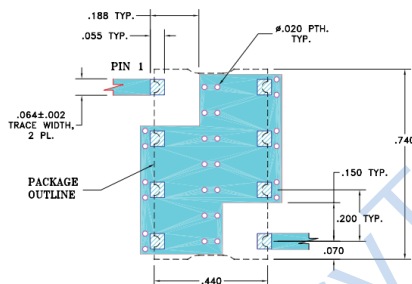
INPUT	1
OUTPUT	8
GROUND	2,3,4,5,6,7

## Outline Drawing



Suggested Layout Tolerance to be within  $\pm 0.5$

## Suggested PCB Layout



### NOTE:

1. TRACE WIDTH IS SHOWN FOR FR4 WITH DIELECTRIC THICKNESS: .025"±.002". COPPER: 1/2 OZ. EACH SIDE. FOR OTHER MATERIALS TRACE WIDTH MAY NEED TO BE MODIFIED.
2. BOTTOM SIDE OF THE PCB IS CONTINUOUS GROUND PLANE.

- DENOTES PCB COPPER LAYOUT WITH SMOBC (SOLDER MASK OVER BARE COPPER)
- DENOTES COPPER LAND PATTERN FREE OF SOLDER MASK

## Outline Dimensions: Unit ( mm )

A	11.18	G	1.02
B	18.80	H	16.76
C	6.86	J	5.08
D	5.08	K	11.94
E	1.78	L	1.40
F	1.52	M	1.52
WT	0.3g		