

B75-0. 7-5-2000M

5-800MHz 75Ω H2 Balun

• APPLICATIONS

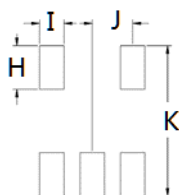
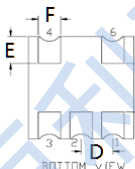
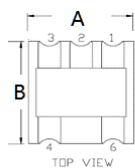
• Ideally suitable for CATV broadband applications.

• FEATURES

- Surface mount
- Impedance ratio: 75Ω:50Ω
- RoHS compliant
- Available on tape and reel

DIMENSIONS

Land Pattern



| | | | | | | |
|------|------|------|------|------|------|------|
| A | B | C | D | H | I | J |
| 4.21 | 4.21 | 2.66 | 1.27 | 1.40 | 0.76 | 1.57 |
| E | F | G | | K | | |
| 1.11 | 0.90 | 2.00 | | 4.83 | | |

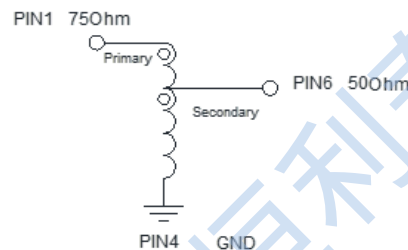
Unless otherwise stated dimensions are in mm

Tolerance: .xx ± 0.25, .xxx ± 0.05

ELECTRICAL SPECIFICATIONS@25°C:

| Parameters (P#: ENA PORT) | frequency band | Min. | Typ. | Max. | Unit |
|------------------------------|----------------|------|-------|------|------|
| Port Impedance, Z0 (P1 / P2) | | | 75/50 | | Ohm |
| Insertion Loss | 5-800MHz | | 0.8 | 1.5 | dB |
| | 800-2000MHz | | 1.3 | 2.0 | dB |
| Input Return Loss | 5-800MHz | 18.0 | 23.0 | | dB |
| | 800-2000MHz | 15.0 | 22.0 | | dB |
| Output Return Loss | 5-800MHz | 15.0 | 18.0 | | dB |
| | 800-2000MHz | 10.0 | 15.0 | | dB |

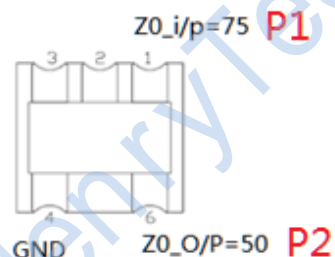
FUNCTIONAL SCHEMATIC



PIN CONFIGURATION

| Pin No. | Function |
|---------|---------------|
| 1 | Input 75 Ohm |
| 2 | NA |
| 3 | NA |
| 4 | Ground |
| 6 | Output 50 Ohm |

APPLICATION & TEST CIRCUIT

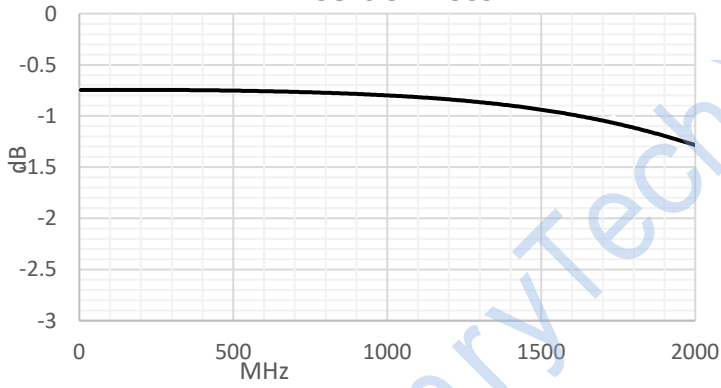


ABSOLUTE MAXIMUM RATINGS

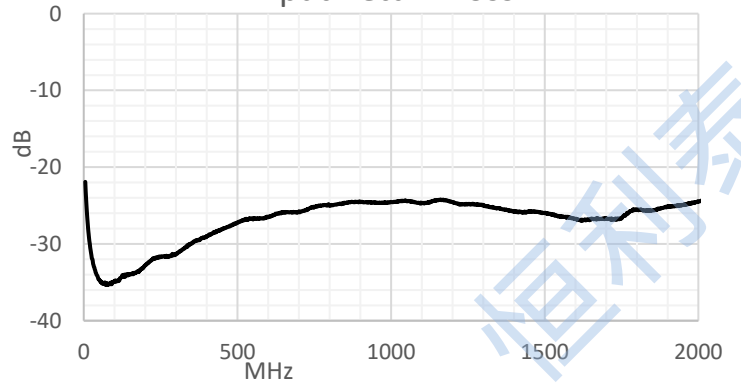
| Parameter | Value |
|-----------------------------|-------------|
| Input RF Power | 250mW Max |
| DC Current | 200mA Max |
| Operating Temperature Range | -40 to 85°C |

TEST CURVE

Insertion Loss



Input Return Loss



Output Return Loss

